

ZOOMLION

ZRT1500V643A

Rough Terrain Crane

中联重科越野轮胎起重机



ZOOMLION

Zoomlion Heavy Industry Science & Technology Co.,Ltd.

Add: No.677, Lugu Road, Zoomlion Industril Park, Changsha, Hunan, China, 410205

Copyright©2024 ZOOMLION. All rights reserved.

Reproduction and copying of any part of contents is not allowed for any purposes without Zoomlion's approval.

Product specifications are subject to change without notice and obligation.

The photographs and/or drawing in this document are for illustrative purposes only. Please consult your local ZOOMLION staff for more information.

website: en.zoomlion.com

中联重科股份有限公司

地址：湖南省长沙市中联重科工业园麓谷大道 677 号 邮编 410205

版权为中联重科所有，未经中联重科许可，本样册任何内容不得被复制。

由于技术的不断进步，技术参数及配置如有更新，恕不另行通知，本画册图例仅供说明参考，请咨询属地员工以获得更多产品信息。

网站：en.zoomlion.com



Technical Advantages

技术优势

Strong Performance 性能强劲

- Six sections large oval-shaped profile boom, featuring topology-optimized design and the strongest lifting performance in its class;
- Two-axle chassis with wide outriggers and multiple counterweight modes, ensuring high flexibility and stability for long-reach and high-lift operations.
- 6节大截面椭圆型吊臂，结构拓扑优化设计，起重性能同级别最强；
- 2桥专用底盘大跨距支腿和多配重组合，灵活性高，稳定性好，更适合吊远和吊高作业。

Precise Control 操控精准

- High-efficiency electro-proportional constant power load-sensing pump and high-response, high-resolution electro-proportional valve deliver stable control output.
- 高效电比例恒功率负载敏感泵和高响应高分辨率电比例阀，提供稳定控制输出。

Intelligent & Safe 智能安全

- The vehicle features an all-around camera and radar system, enabling real-time monitoring during driving and operations without blind spots;
- Equipped with outrigger condition recognition functionality, it automatically recommends the lifting mode, effectively preventing incorrect outrigger selection and ensuring safer operations.
- 整车配置全方位影像和雷达系统，行驶、作业实时监测，无视觉盲区。
- 搭载支腿工况识别联动功能，起重模式自动推荐，有效避免支腿选择误操作，作业更安全。

Comfortable & Beautiful 舒适美观

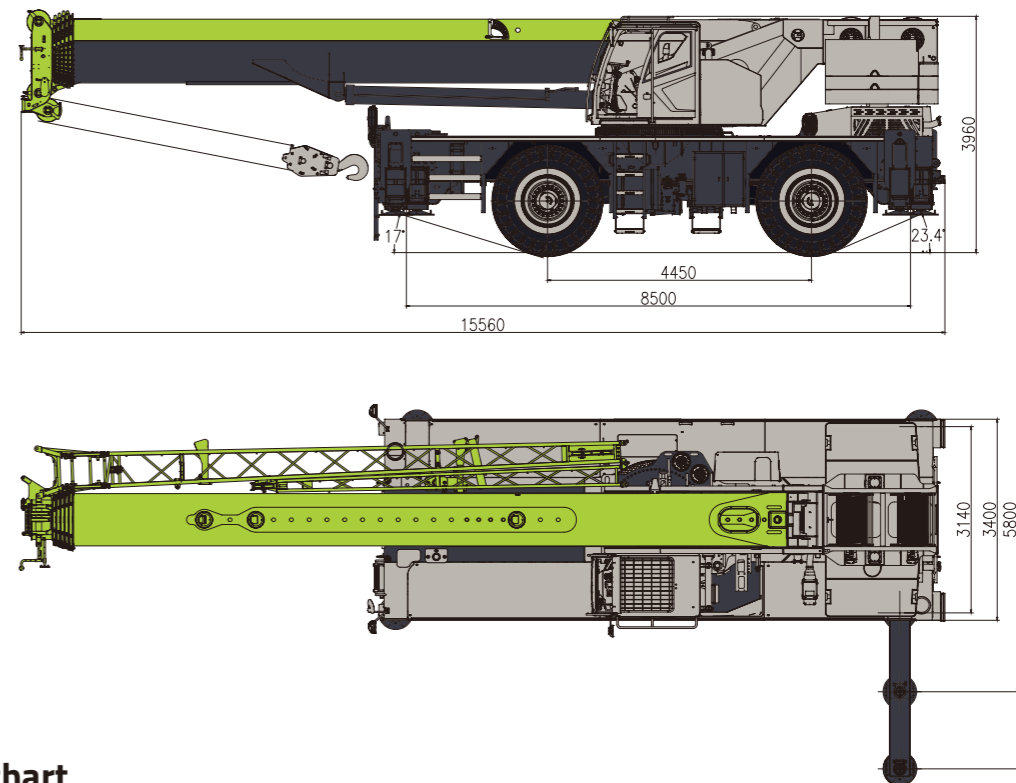
- Panoramic driver's cab is 10% larger, with a 12.1" touchscreen, electric armrest, and seat ventilation for improved comfort.
- 全景司机室功能提升，整体空间增大10%，配备12.1"全彩触摸屏显示器，电动扶手箱及座椅通风，作业更舒适。

Items 项目	Unit 单位	Values 数值
Max. rated lifting capacity 最大额定总起重量	USt	150
Max. load moment of basic boom 基本臂最大起重力矩	kN.m	3940
Max. load moment of max. length boom 最长主臂最大起重力矩	kN.m	1650
Longest main boom 主臂最大臂长	m	60.5
Longest main boom + jib 主臂 + 副臂最大臂长	m	60.5+16
Max. speed of single rope 主卷扬单绳最大速度	m/min	130
Highest traveling speed 最高行驶速度	km/h	20
Max. gradeability 最大爬坡度	%	71
Deadweight in traveling 行驶状态自重	t	67
Overall dimensions (L×W×H) 外形尺寸(长×宽×高)	mm	15560×3400×3960
Outrigger span (longitudinal × transversal) 支腿跨距(纵向×横向)	mm	8500 × 8400
Rated power / rotational speed 额定功率 / 转速	kW/rpm	194/2500
Max. output torque / rotational speed 最大扭矩 / 转速	N.m/rpm	1152/1500

Dimensions

整机尺寸

Unit: mm
单位: 毫米



Lifting height chart

起升高度曲线图

