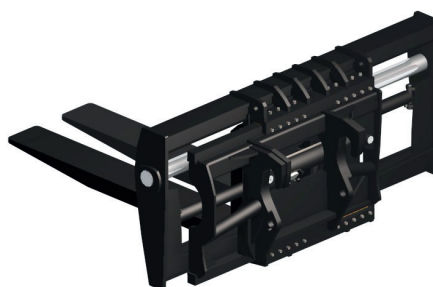
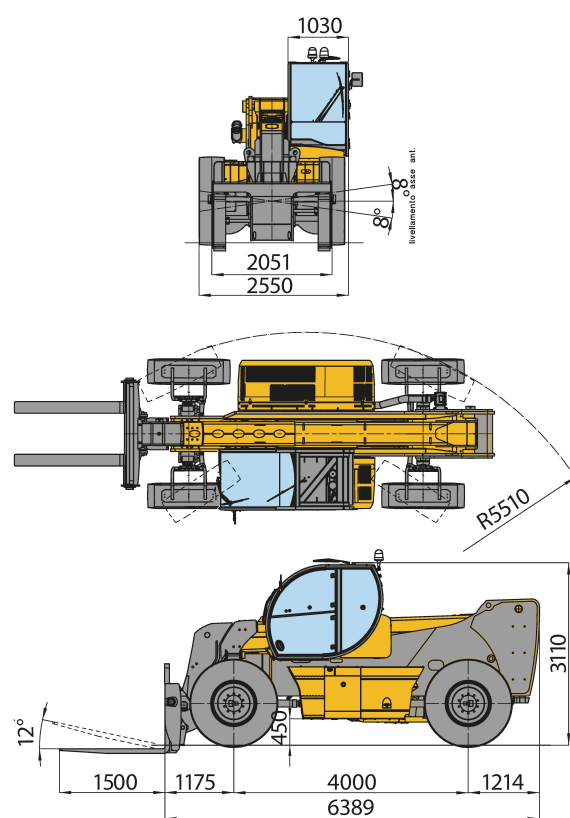
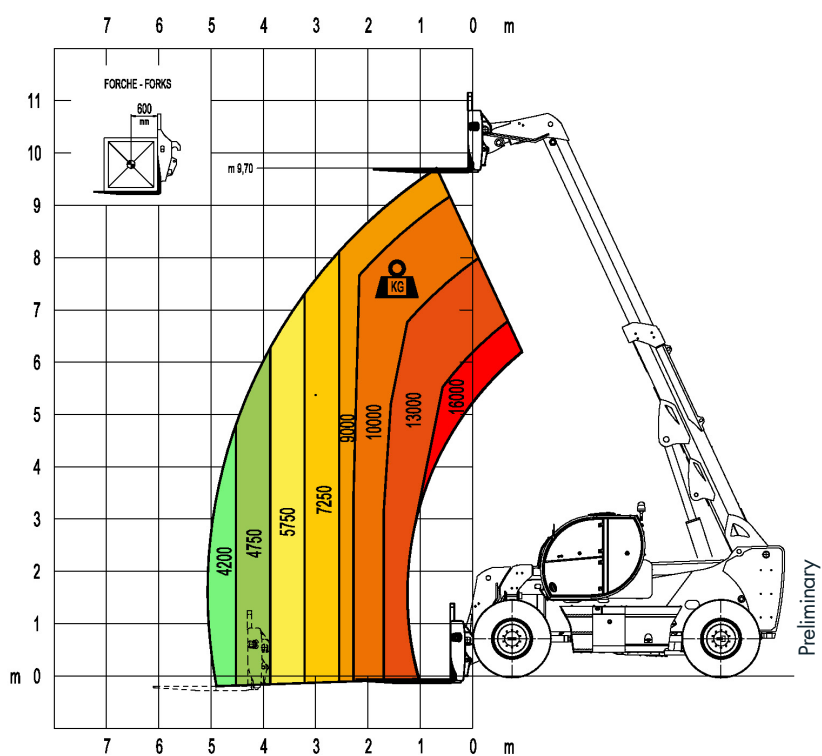




HTH16.10



Load chart with forks



Clamp for wheels handling, with a capacity up to 8.000 kg from 24 to 63 inches .

- MAGNI patented quick fit of the attachment
- Attachments automatic recognition RFID system



LIFT CAPACITY	16.000 Kg at 600 mm load center
MAXIMUM LIFTING HEIGHT	9.70m
MAXIMUM REACH	5.10 m
FORKS	Fork carriage 2.000 mm width Forks 200x70x1.500 mm
CAB	FOPS-ROPS tested hermetic cab with protectors Front, rear and upper wiper Headlights for road circulation, flashing beacon Rear view mirrors Heating - Air conditioning
CONTROLS	Multi-function electro proportional joystick
BRAKE SYSTEM	Hydraulic servo-assisted multidisc brake in oil bath on both axles, with double circuit Negative parking brake
ENGINE	JCB DIESELMAX stage 3A Turbo intercooler 4 cylinders / 4.399 cm ³ Power 145 HP — 108 KW Max rpm = 2.200 Max torque 550 Nm at 1.500 rpm Electronic injection (single pump each injector) Liquid cooling system
AXLES	Heavy Duty with epicyclic reduction One steering cylinder each axle Levelling correction front axle at + 8° on the right and + 8° on the left 3 types of steering: - with front steering - with round steer - with crab steering Tilting rear axle
PERFORMANCE	Max. travel speed: 25 km/h Drawbar pull: 114 kn Gradeability: 35% Turning radius (end of forks): 5.510 mm
WEIGHTS	Total unladen: 20.500 kg Front axle unladen (boom retracted and lowered): 9.000 kg Rear axle unladen (boom retracted and lowered): 11.500 kg
TRANSMISSION	Rexroth hydrostatics Variable displacement hydrostatic pump 110 cc with electronic control One variable displacement hydrostatic motor 150 cc Hydraulic gearbox with 2 speeds forward / reverse
HYDRAULIC CIRCUIT	Load sensing piston pump 60 cc 132 l/min Circuit at 350 bar Rexroth Proportional hydraulic distributor Suction and return line filters High pressure flexible hoses
TANKS CAPACITIES	Engine oil = 16 l Cooling liquid = 20 l Hydraulic oil tank = 210 l Fuel tank = 200 l
TYRES DIMENSIONS	16.00 - R25 ** two each axle, driving and steering
SAFETY	Electronic safety system which controls the load with definition of the lifted load, radius and comparison with the diagrams stored. Block of aggravating movements of the load. Safety valves on cylinders

The data in this brochure are informative and subject to change without notice