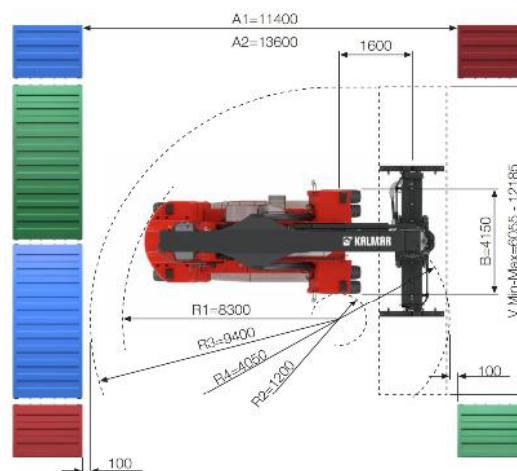
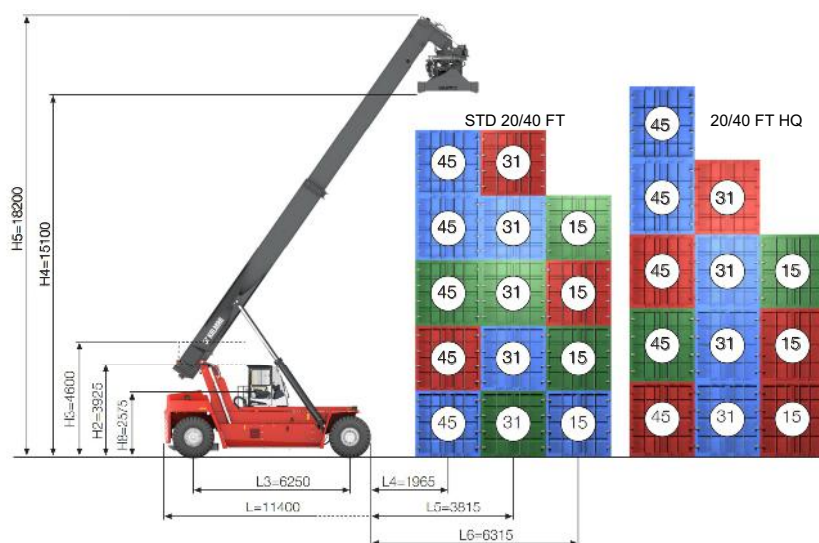
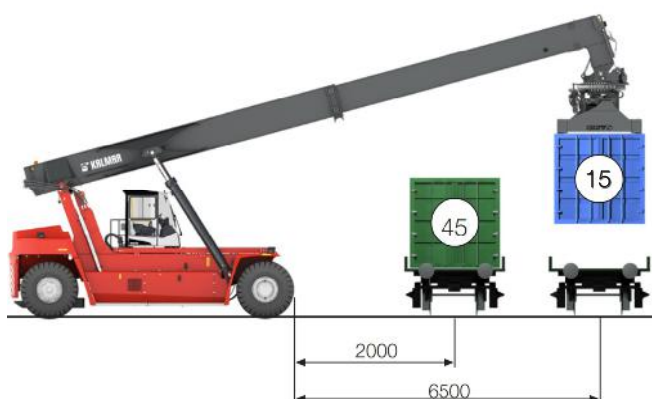


# KALMAR

## DRU450-62S5



### Dimensions

Boom angle (°)	$\alpha$	0 - 60
Attachment rotation, CW - CCW (°)	B	+195 / - 105 (300)
Sideshift $\pm$ (mm)	V1	$\pm 800$
Boom stroke / outreach (mm)		7000
Number of rotation motors and rotation brakes		2 + 2
Spreader lifting eyes, in boom nose		4
Pile slope stroke (MPS or HPS), side tilt in spreader (°)		$\pm 5$
Track (c-c), front - rear	S	3030 - 2600
Ground clearance, min. (mm)		250

### DRU450-62S5

**Lifting data**
**DRU450-62S5**

Lifting capacity at load centre L4, rated – at max. lifting height (kg)	45000 - 45000
Lifting capacity at load centre L5, rated – at max. lifting height (kg)	31000 - 31000
Lifting capacity at load centre L6, rated – at max. lifting height (kg)	15000 - 15000
Lifting speed L4, unloaded – at 70% of rated load (m/s)	0,42 - 0,25
Lowering speed L4, unloaded – at rated load (m/s)	0,36 - 0,36

**Driving data**

Travelling speed forward, unloaded – at rated load (km/h)	26 - 22
Travelling speed backward, unloaded – at rated load (km/h)	18 - 16
Gradeability at 2 km/h, unloaded – at rated load (%)	38 - 22
Gradeability max., unloaded – at rated load (%)	35 - 19
Drawbar pull, max. (kN)	310

**Weight of trucks**

Service weight (kg)	69500
Axle load front at load centre L4, unloaded – at rated load (kg)	34700 - 99900
Axle load front at load centre L5, unloaded – at rated load (kg)	38900 - 93000
Axle load front at driving position according to ISO22915-12, and rated load (kg)	88500
Axle load rear at load centre L4, unloaded – at rated load (kg)	34800 - 14600
Axle load rear at load centre L5, unloaded – at rated load (kg)	30600 - 7500
Axle load rear at driving position according to ISO22915-12, and rated load (kg)	26000

**Engine**

Manufacturer / model	Cummins / QSM-11-C330
Fuel / type of engine	Diesel / 4 stroke
Emission stage / approval	EU Stage III / EPA Tier 3
Number of cylinders / displacement (l)	6-inline / 10,8
Power rated @ revs, ISO 3046 (kW / rpm)	246 / 2100
Torque max @ revs, ISO 3046 (Nm / rpm)	1674 / 1100-1400
Alternator, type - power (W)	AC - 2800 (28 / 110)
Starting battery, voltage - capacity (V – Ah)	2×12 - 135-145
Fuel consumption, normal driving (l/h)	14-18

**Transmission**

Manufacturer / model	Dana / TE-30500
Clutch, type	Torque converter
Gearbox, type	Automatic Powershift
Number of gears, forward - reverse	5 - 3
Driving axle, manufacturer / type	Kessler D-102 / WDB, differential, hub reduction

**Wheels**

Tyre, type	Diagonal, Pneumatic, Tubeless
Dimensions, front – rear (inch)	18.00x25 – 18.00x25, PR40 E4
Rim dimension, front – rear (inch)	18.00x25 - 18.00x25, PR40 E4
Number of wheels, front – rear (*driven)	4* - 2
Pressure (MPa)	1,0

**Miscellaneous**

Steering system, type – maneuvering	Service assisted - Steering wheel
Service brake system, type – affected wheels	Wet disc brakes - Drive wheel
Parking brake system, type – affected wheels	Spring brake - Drive wheel
Noise level EN12053 with ECO modes - equivalent inside cabin LpAZ (dB(A))	75-77 (Opt 74-76)
Noise level EN12053 with ECO-modes - equivalent outside cabin LwAZ (dB(A))	110-113 (Opt 108-111)
Max. hydraulic pressure (MPa) boom / spreader	23,0
Fuel volume (l)	550
Hydraulic oil volume (l)	740 (600 + 140)
Overload protection	Electronic